

*Coloring concrete with **Stain-Crete** is affordable and offers many options*

Stain-Crete is a deep penetrating, chemical stain that can be used to color old or new concrete that has cured a minimum of 14 to 28 days. **Stain-Crete** chemically reacts with cured concrete to provide a distinctive, permanent color with a subtly shaded marbled effect, similar to the aged appearance of natural stone. **Stain-Crete's** rich variegated finish will not peel, chip or fade. **Stain-Crete** provides a terrific custom look and is ideal for residential, commercial or municipal applications including masonry surfaces, basement floors, garage floors, driveways, entryways, masonry walls, patios, pool decks, sidewalks, walkways as well as restaurants, mail entrances, hotels and showrooms.

***Stain-Crete** is easy to maintain*

**Stain-Crete** provides a stain-resistant surface that is impervious to salts and salt spray, alkali, ultraviolet rays and abrasion. The **Stain-Crete** surface is easy to maintain and can be cleaned by sweeping, washing with commercial floor cleaners, then polishing with a clean cloth or mop. A periodic application of floor wax will ease cleaning and add luster. To preserve the variegated appearance and provide long-lasting durability, apply INCRETE Systems Clear Seal, a protective sealer containing UV inhibitors. Periodic reapplication of sealer is recommended when surfaces are subject to high pedestrian or vehicular traffic.

*Training and technical support*

INCRETE Systems, Inc., a pioneer in the decorative concrete industry for more than 3 decades, offers the convenience of one-stop shopping for all your concrete resurfacing needs. Training and toll-free telephone technical assistance are also available. Supported by a large network of specially trained licensed contractors across the U.S. and 68 countries worldwide, INCRETE Systems, Inc. is your complete resource for decorative concrete service and technology.

*Available in eight beautiful colors:*



*Consider the family of INCRETE Systems products for your next architectural concrete application.*  
 Increte Spray-Deck Texture-Crete  
 Stone-Crete Color-Crete



Increte Systems, Inc.  
 8509 Sunstate St.  
 Tampa, Florida 33634 U.S.A.  
 Tel: (813) 886-8811 (800) 752-4626 Fax: (813) 886-0188  
 www.increte.com

Increte Systems, Inc.  
 100 S.W. 12th Ave.  
 Pompano Beach, Florida 33069  
 Tel: (954) 788-6487 (888) 847-5905  
 FAX: (954) 946-1145



# Stain-Crete™

*A permanent stain that creates beautiful color tones in existing concrete*



**YOUR LOCAL DEALER:**

*Ascraft's*  
**DECORATIVE CONCRETE**  
 & Supply L.L.C.

1211 Fortune Road  
 Youngsville, LA 70529-5437  
 Phone: 337.856.8400  
 Fax: 337.856.8444

*"Acadiana's Decorative Concrete Specialists"*

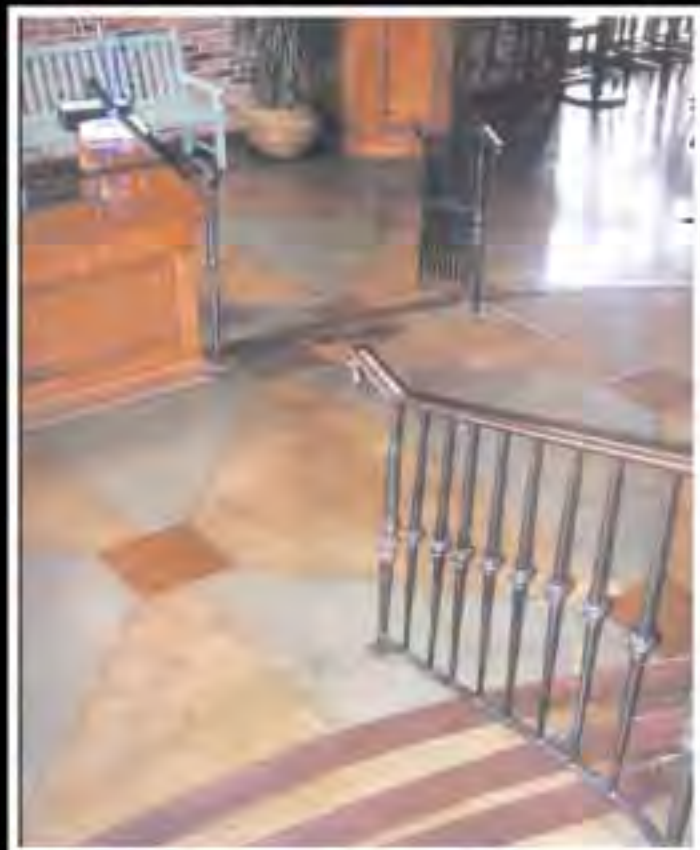
*Demand Only Genuine INCRETE Systems Products*

**"Second Only to Nature"**



# Stain-Crete™

**Decorative concrete staining system designed to create an aesthetically rich and variegated finish that will not peel, chip, or fade**



## **Brings new life to your old, discolored concrete floors**

Transform dull, drab concrete into a beautiful work of art! At left, *Stain-Crete* was applied to the floor of the Coyote Creek Restaurant in Laredo, Texas to create rich, warm tones accented with hand-ground grout lines. INCRETE Systems' *Stain-Crete* is the perfect solution for discolored, old concrete. Whether your project is horizontal, vertical, residential or commercial *Stain-Crete* gives any concrete surface a distinctive and lasting finish.



## **Restores and beautifies, existing surfaces.**

*Stain-Crete* produces a distinctive, permanent color with marbled and translucent effects, much like natural stone. It does not cover up existing surfaces as a conventional stain or paint; rather *Stain-Crete* can be used in conjunction with surfaces that have already been color hardened or integrally colored to create a uniquely beautiful look that cannot be duplicated by any other coloring process.



## **Enhances any decor**

*Stain-Crete* adds an aura of elegance to this stately church interior providing a stunning, multihued finish, evocative of Italian marble.



## **Stain-Crete, an affordable alternative to tile**

Many unique design effects can be achieved with the use of additional contrasting colors. *Stain-Crete* is an affordable alternative to floor coverings such as tile due to its unlimited design capabilities and unmatched durability.







## ***Stain-Crete*** ***redefines elegance***

*Stain-Crete* can be found in the most discriminating restaurants around the world. Savvy commercial designers say *Stain-Crete* is innovative and ideal for the integration of textures, materials and special effect lighting to completely immerse the guest in the dining experience.



## ***Stain-Crete*** allows total ***flexibility and endless design freedom***

*Stain-Crete's* rich palette of earth-based colors and deeply translucent golden hues create a distinctive look and blend beautifully with interior furnishings and fixtures.



## ***Beautiful and Versatile***

*Stain-Crete* is not only beautiful in any setting but also versatile. Practically any creative design can be achieved from horizontal to vertical, *Stain-Crete* transforms any masonry surface into a beautiful work of art.





## Recreates Old World atmosphere

At right, Stain-Crete enhanced this floor at the Taylor Street Pub in Oakbrook, Illinois

Stain-Crete's rich color hues submerge guests at this bistro into an old world atmosphere. (below)



**An unlimited palette of design options  
with the durability and strength of concrete.**

*Stain-Crete* offers a surfacing option to fit any design criteria or budget.



## Stain-Crete is ideal for large commercial projects

The Market Street United Supermarket in Wichita Falls, Texas features 50,000 sq. ft. of *Stain-Crete*. Above, the Market Street logo is embossed in Terra Cotta colored *Stain-Crete* accented by Increte Systems' custom blue and white Concrete Stain Sealer.

At left, this furniture showroom utilizes *Stain-Crete* in a lightened walnut color for its massive entryway. The low-maintenance, durable *Stain-Crete* surface is perfect for high traffic areas and provides a luxurious look in a practical and affordable flooring solution.

